



## QUICK RELEASE & MULTI-K COUPLINGS

CONSTRUCTION





**MINI ESCAVATOR**



4

**ESCAVATOR**



10

**BIG ESCAVATOR**



16

**BACKHOE LOADER**



22



**ARGUS quick release couplings  
powering hydraulic efficiency in construction equipment**

Alfagomma, a global leader in fluid handling systems since 1956, is synonymous with innovation, quality, and reliability. Renowned for its decades of expertise and comprehensive product portfolio, Alfagomma develops and supplies hydraulic and industrial flexible hoses, manipulated tubes, quick release couplings, fittings, and expansion joints.

In the construction industry, efficiency and durability are essential. Equipment like excavators and backhoe loaders must operate in harsh conditions, requiring hydraulic systems that perform under extreme pressure, heavy loads, and continuous use.

As part of the Alfagomma Group, the ARGUS brand is committed to providing high-performance quick release couplings, tailored to meet the demanding standards of construction OEMs.

Whether on urban job sites, large-scale infrastructure projects, or remote excavation areas, construction machinery depends on hydraulic components that can handle frequent coupling and uncoupling without compromising efficiency. ARGUS quick release couplings are engineered to optimize hydraulic connections, making equipment safer, easier to operate, and more productive.

Alfagomma, through its ARGUS quick release couplings, provides precision-engineered solutions to support the evolving needs of the construction industry.

ARGUS quick release couplings are designed to deliver outstanding hydraulic performance, ensuring secure, smooth, and leak-proof connections in the toughest construction environments.

Designed to meet OEM requirements, these couplings improve operational efficiency, reduce maintenance time, and enhance the durability of heavy equipment.

By choosing Alfagomma and ARGUS, OEMs gain a trusted partner committed to innovation and excellence in the construction industry.





## ARGUS

### Reliable quick release and diagnostic couplings for compact excavators

*ARGUS quick release couplings for compact excavators ensure fast, secure hydraulic connections, minimizing leaks, handling high pressures, and enabling coupling under residual pressure. Designed for efficiency and durability, they comply with ISO 7241 A, ISO 5675, ISO 16028, and ISO 14541.*

*Various designs are available to suit different needs, applications, and environments, ensuring reliable performance in diverse operating conditions.*



All couplings are made from galvanized steel with hardened components, ensuring high wear resistance and long service life in demanding hydraulic applications.

**SVK-ISO-A series.** Simple and efficient solution for coupling and uncoupling hydraulic lines. Featuring a poppet valve mechanism, they ensure secure, leak-free connections. Designed per ISO 7241-1, they are interchangeable across manufacturers, making them a versatile solution.

**SVK-1H ISO A series.** Compliant with ISO 7241 A standard, they feature break-away function, low-pressure drop, and one-hand push-pull operation. Designed to ensure secure, leak-free connections, they meet ISO 5675 and SAE J 1036, enhancing the efficiency and reliability of hydraulic systems, particularly in compact equipment.

**SPK-1H series.** Compliant with ISO 5675 and SAE J 1036, they offer one-hand push-pull operation, break-away function, and low-pressure drop. They allow secure and leak-free connection also under residual pressure while preventing unintentional disconnection from hydraulic backflow.

**FPK series.** The **FPK** quick release couplings enable efficient connection and disconnection of hydraulic lines in low or zero pressure ranges. Featuring automatic flow control and a safety system against accidental uncoupling, they ensure reliable performance. The **FPK P** series exhibits the same characteristics as the FPK range, but with the added advantage of connection under pressure.

**DK series.** Diagnostic couplings are specifically designed for pressure detection in oleo-hydraulic circuits, allowing a quick connection/disconnection of the measuring equipment.

**HDK series.** **HDK** high-pressure screw-type quick release couplings, compliant with ISO 14541, ensure robust construction and excellent flow rate. They provide secure connections under residual pressure up to 50 bar, and prevent unintentional disconnection. The **HDK HA** series exhibits characteristics common to the HDK range, yet it is specifically developed and designed for hammer application.

**RPV Series.** These quick release couplings provide a efficient solution for high-pressure hydraulic connections, ensuring secure, leak-free operations even in the presence of under static pressure. Their robust design enhances system durability and performance in demanding applications.



// SVK-1H-ISO-A

**Poppet valve**

- Compatible with ISO 7241-1-A, and with ISO 5675, and SAE J 1036
- Working pressure max 400 bar
- DN 6 to 25
- Break-away function
- One-hand push pull operation
- Pull-off couplings function
- Low pressure drop



// SPK-1H

**Poppet valve**

- Compatible with ISO 7241-1-A
- Working pressure 250 bar
- DN 13
- Connectable with male part under pressure
- Break-away function
- One-hand push pull operation
- Low pressure drop



// SVK-ISO-A

**Poppet valve**

- Compatible with ISO 7241 A
- Working pressure max 350 bar
- DN 6 to 51
- Quick and simple coupling and uncoupling
- Cost-effective solution
- Rated flow and pressure drop compliant with ISO 7241-1



// HDK & HDK HA

**Poppet valve**

- Compatible with ISO 14541
- Working pressure up to 450 bar
- DN 8 to 32
- Excellent flow rate with low pressure drop
- Leak-free performance for eco-friendly operation



// FPK & FPK P

**Flat face**

- Compatible with ISO 16028
- Working Pressure 350 bar
- DN 6 to 25
- Low leak-oil rates, eco-friendly
- Flow performance optimized by CFD
- FPK P version connectable under pressure



// DK

**Flat face**

- Compatible with ISO 15171-1
- Working pressure 430 bar
- DN 6
- Compatibility with other couplings in-use
- Low leak-oil rates, eco-friendly
- Low pressure drop



// RPV

**Flat face**

- Max residual (static) pressure during connection/disconnection up to 30 MPa
- Working pressure 350 bar
- DN 6 to 16
- Easy-to-clean flat-face design
- Oil-leak-proof, environmentally friendly solution
- Jump-size available on request





## ARGUS quick release couplings, diagnostic connections, and multi plates for Midi and Medium excavators

*ARGUS quick release couplings for midi and medium excavators enable efficient hydraulic tool changes, handling high pressures, increased flow, and demanding workloads. They minimize downtime, oil leaks, and pressure losses, ensuring secure connections even under residual pressure. Compliant to industry standards, they offer versatility, durability, and reliability for earthmoving, demolition, roadwork, and material handling.*

All components are made from galvanized steel with hardened components, ensuring high wear resistance and long service life in demanding hydraulic applications.

**SVK-ISO-A series.** Simple and efficient solution for coupling and uncoupling hydraulic lines. Featuring a poppet valve mechanism, they ensure secure, leak-free connections. Designed per ISO 7241-1, they are interchangeable across manufacturers, making them a versatile solution.

**SVK-1H ISO A series.** Compliant with ISO 7241 A standard, they feature break-away function, low-pressure drop, and one-hand push-pull operation. Designed to ensure secure, leak-free connections, they meet ISO 5675 and SAE J 1036, enhancing the efficiency and reliability of hydraulic systems, particularly in compact equipment.

**SPK-1H series.** Compliant with ISO 5675 and SAE J 1036, they offer one-hand push-pull operation, break-away function, and low-pressure drop. They allow secure and leak-free connection also under residual pressure while preventing unintentional disconnection from hydraulic backflow.

**FPK series.** The **FPK** quick release couplings enable efficient connection and disconnection of hydraulic lines in low or zero pressure ranges. Featuring automatic flow control and a safety system against accidental uncoupling, they ensure reliable performance. The **FPK P** series exhibits the same characteristics as the FPK range, but with the added advantage of connection under pressure.

**DK series.** Diagnostic couplings are specifically designed for pressure detection in oleo-hydraulic circuits, allowing a quick connection/disconnection of the measuring equipment.

**HDK series.** **HDK** high-pressure screw-type quick release couplings, compliant with ISO 14541, ensure robust construction and excellent flow rate. They provide secure connections under residual pressure up to 50 bar, and prevent unintentional disconnection. The **HDK HA** series exhibits characteristics common to the HDK range, yet it is specifically developed and designed for hammer application.

**RPV Series.** These quick release couplings provide a efficient solution for high-pressure hydraulic connections, ensuring secure, leak-free operations even in the presence of under static pressure. Their robust design enhances system durability and performance in demanding applications.

**Multi-K.** ARGUS multi-connection plates streamline the hydraulic line connection between the tractor and agricultural implements, ensuring efficiency, safety, and a compact design.





// SVK-1H-ISO-A

**Poppet valve**

- Compatible with ISO 7241-1-A, and with ISO 5675, and SAE J 1036
- Working pressure max 400 bar
- DN 6 to 25
- Break-away function
- One-hand push pull operation
- Pull-off couplings function
- Low pressure drop



// SPK-1H

**Poppet valve**

- Compatible with ISO 7241-1-A
- Working pressure 250 bar
- DN 13
- Connectable with male part under pressure
- Break-away function
- One-hand push pull operation
- Low pressure drop



// SVK-ISO-A

**Poppet valve**

- Compatible with ISO 7241 A
- Working pressure max 350 bar
- DN 6 to 51
- Quick and simple coupling and uncoupling
- Cost-effective solution
- Rated flow and pressure drop compliant with ISO 7241-1



// HDK & HDK HA

**Poppet valve**

- Compatible with ISO 14541
- Working pressure up to 450 bar
- DN 8 to 32
- Excellent flow rate with low pressure drop
- Leak-free performance for eco-friendly operation
- HDK HA for hammer application



// FPK & FPK P

Flat face

- Compatible with ISO 16028
- Working Pressure 350 bar
- DN 6 to 25
- Low leak-oil rates, eco-friendly
- Flow performance optimized by CFD
- FPK P version connectable under pressure



// RPV

Flat face

- Max residual (static) pressure during connection/disconnection up to 30 MPa
- Working pressure 350 bar
- DN 6 to 16
- Easy-to-clean flat-face design
- Oil-leak-proof, environmentally friendly solution
- Jump-size available on request



// DK

Flat face

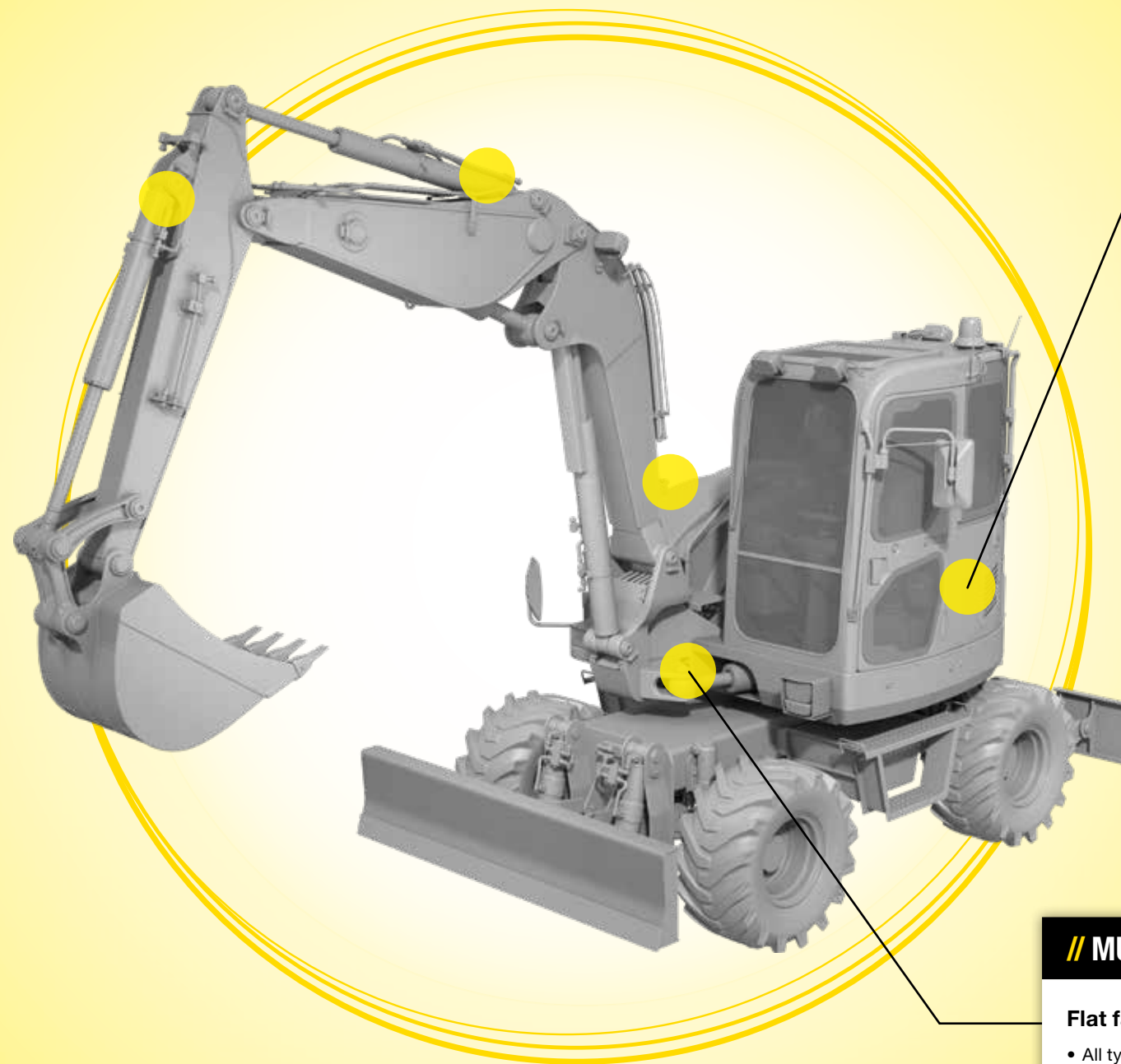
- Compatible with ISO 15171-1
- Working pressure 430 bar
- DN 6
- Compatibility with other couplings in-use
- Low leak-oil rates, eco-friendly
- Low pressure drop



// MULTI-K

Flat face

- All types of thread configurations for hose connections
- DN 10 to 25
- Seal and back-up ring in NBR and PTFE
- Lock lever in steel with galvanic protection
- Safetely block in steel and aluminium
- Designed to meet customer specifications





## ARGUS reliable quick release couplings, diagnostic connections, and multi plates for large excavators

*ARGUS quick release couplings for large excavators ensure efficient hydraulic tool changes, managing higher pressures, extreme flow rates, and heavy-duty operations. Designed for maximum durability and reliability, they minimize downtime, leaks, and pressure losses, ensuring secure connections even under residual pressure. Compliant with industry standards, they offer versatility and robust performance for earthmoving, quarrying, demolition, and large-scale material handling.*

**ARGUS** manufactures every kind of quick release and multi-coupling system according to customer's needs or specifications.

**SVK-ISO-A series.** Simple and efficient solution for coupling and uncoupling hydraulic lines. Featuring a poppet valve mechanism, they ensure secure, leak-free connections. Designed per ISO 7241-1, they are interchangeable across manufacturers, making them a versatile solution.

**SVK-1H ISO A series.** Compliant with ISO 7241 A standard, they feature break-away function, low-pressure drop, and one-hand push-pull operation. Designed to ensure secure, leak-free connections, they meet ISO 5675 and SAE J 1036, enhancing the efficiency and reliability of hydraulic systems, particularly in compact equipment.

**SPK-1H series.** Compliant with ISO 5675 and SAE J 1036, they offer one-hand push-pull operation, break-away function, and low-pressure drop. They allow secure and leak-free connection also under residual pressure while preventing unintentional disconnection from hydraulic backflow.

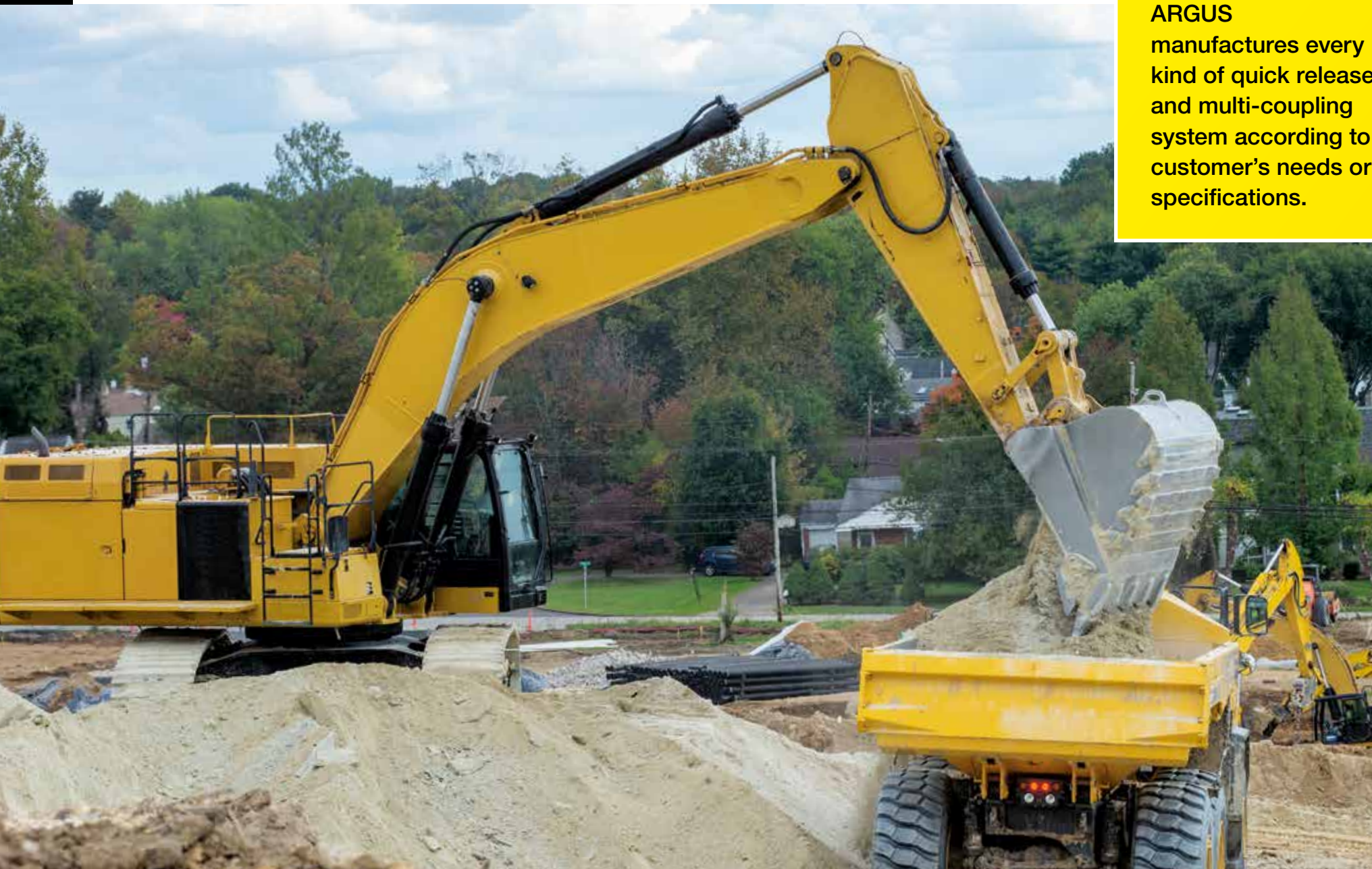
**FPK series.** The **FPK** quick release couplings enable efficient connection and disconnection of hydraulic lines in low or zero pressure ranges. Featuring automatic flow control and a safety system against accidental uncoupling, they ensure reliable performance. The **FPK P** series exhibits the same characteristics as the FPK range, but with the added advantage of connection under pressure.

**DK series.** Diagnostic couplings are specifically designed for pressure detection in oleo-hydraulic circuits, allowing a quick connection/disconnection of the measuring equipment.

**HDK series.** **HDK** high-pressure screw-type quick release couplings, compliant with ISO 14541, ensure robust construction and excellent flow rate. They provide secure connections under residual pressure up to 50 bar, and prevent unintentional disconnection. The **HDK HA** series exhibits characteristics common to the HDK range, yet it is specifically developed and designed for hammer application.

**RPV Series.** These quick release couplings provide a efficient solution for high-pressure hydraulic connections, ensuring secure, leak-free operations even in the presence of under static pressure. Their robust design enhances system durability and performance in demanding applications.

**Multi-K.** ARGUS multi-connection plates streamline the hydraulic line connection between the tractor and agricultural implements, ensuring efficiency, safety, and a compact design.





// SVK-1H-ISO-A

**Poppet valve**

- Compatible with ISO 7241-1-A, and with ISO 5675, and SAE J 1036
- Working pressure max 400 bar
- DN 6 to 25
- Break-away function
- One-hand push pull operation
- Pull-off couplings function
- Low pressure drop



// SVK-ISO-A

**Poppet valve**

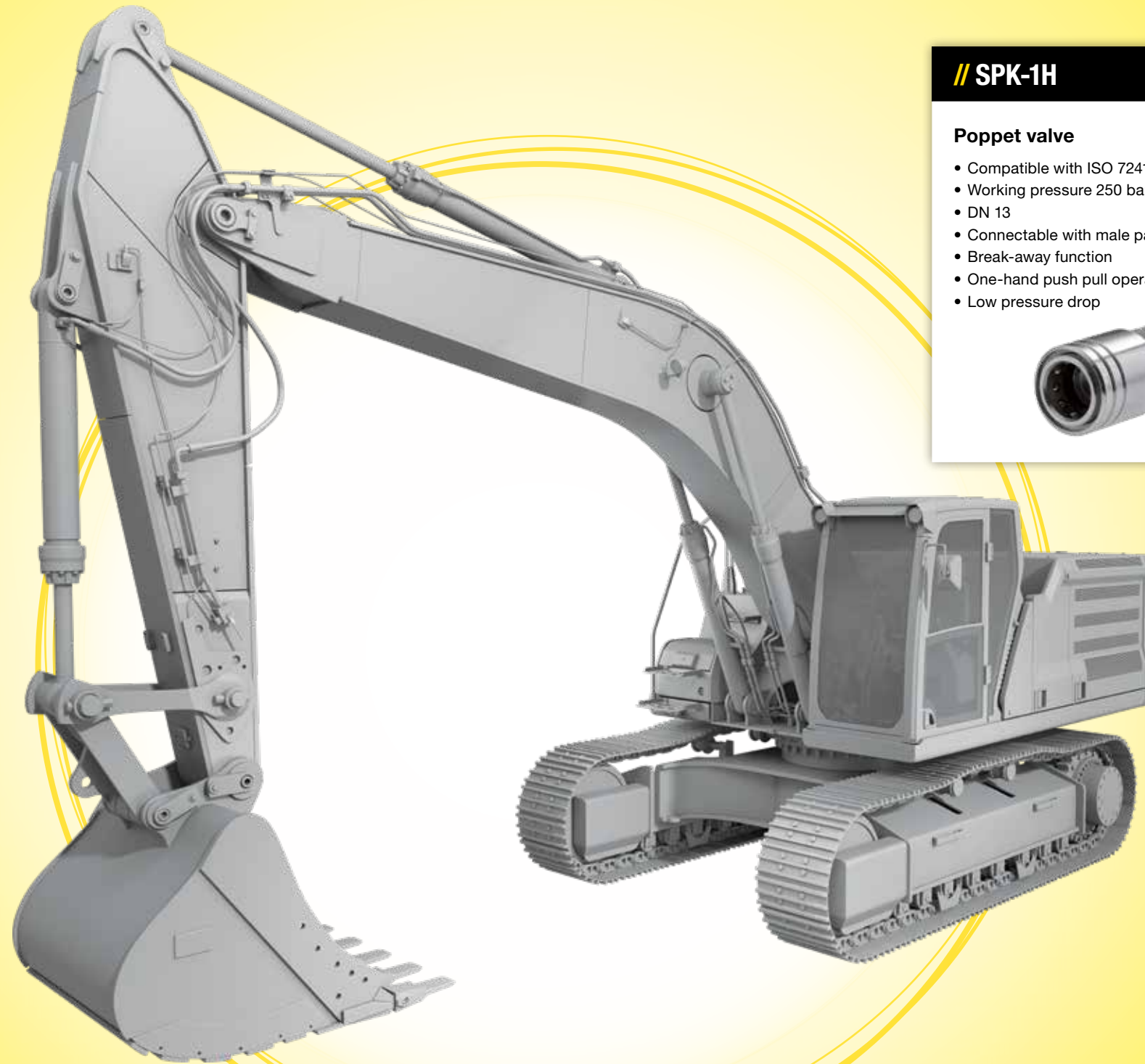
- Compatible with ISO 7241 A
- Working pressure max 350 bar
- DN 6 to 51
- Quick and simple coupling and uncoupling
- Cost-effective solution
- Rated flow and pressure drop compliant with ISO 7241-1



// SPK-1H

**Poppet valve**

- Compatible with ISO 7241-1-A
- Working pressure 250 bar
- DN 13
- Connectable with male part under pressure
- Break-away function
- One-hand push pull operation
- Low pressure drop



// HDK & HDK HA

**Poppet valve**

- Compatible with ISO 14541
- Working pressure up to 450 bar
- DN 8 to 32
- Excellent flow rate with low pressure drop
- Leak-free performance for eco-friendly operation
- HDK HA for hammer application





// FPK & FPK P

Flat face

- Compatible with ISO 16028
- Working Pressure 350 bar
- DN 6 to 25
- Low leak-oil rates, eco-friendly
- Flow performance optimized by CFD
- FPK P version connectable under pressure



// RPV

Flat face

- Max residual (static) pressure during connection/disconnection up to 30 MPa
- Working pressure 350 bar
- DN 6 to 16
- Easy-to-clean flat-face design
- Oil-leak-proof, environmentally friendly solution
- Jump-size available on request



// MULTI-K

Flat face

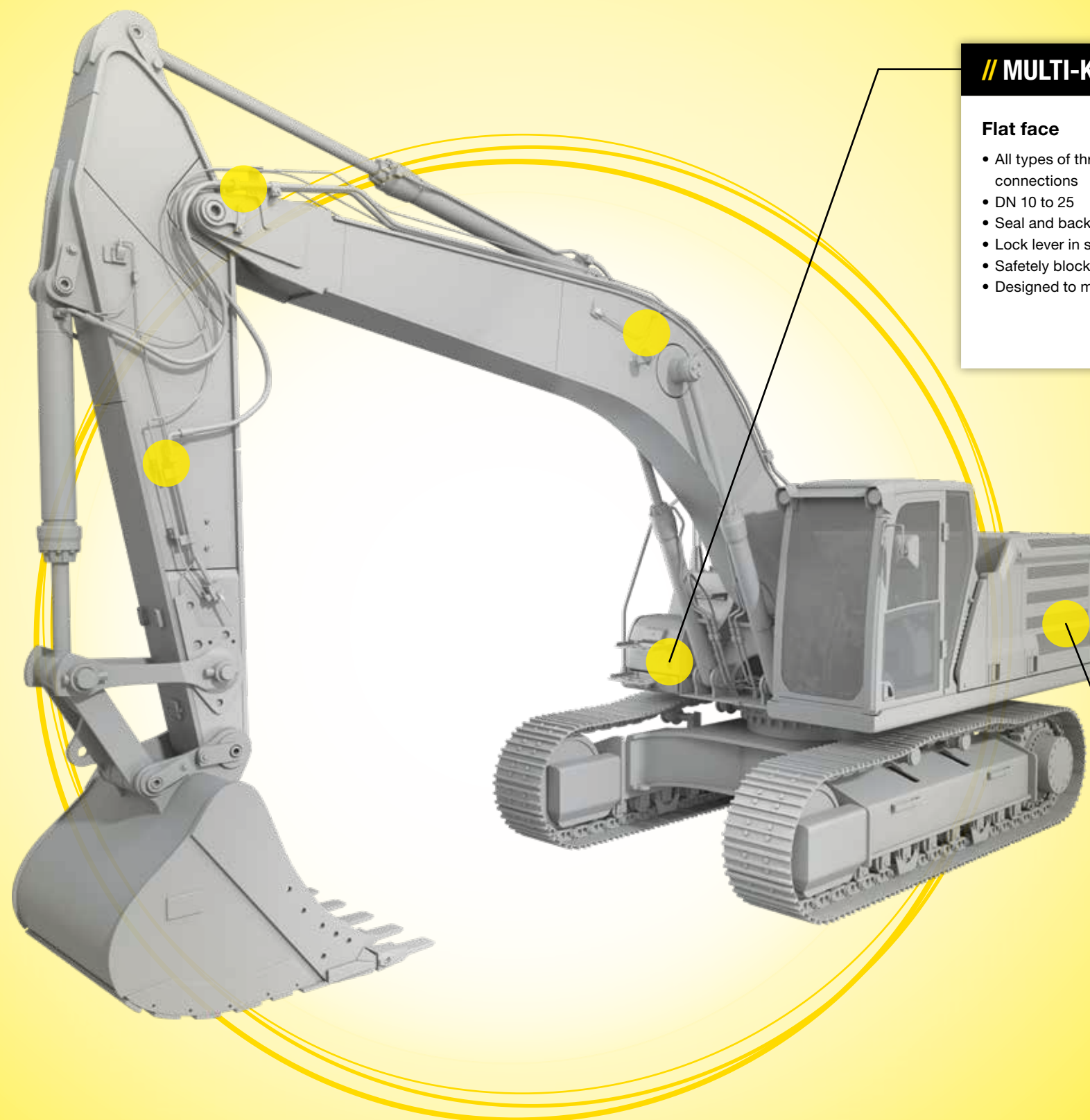
- All types of thread configurations for hose connections
- DN 10 to 25
- Seal and back-up ring in NBR and PTFE
- Lock lever in steel with galvanic protection
- Safely block in steel and aluminium
- Designed to meet customer specifications



// DK

Flat face

- Compatible with ISO 15171-1
- Working pressure 430 bar
- DN 6
- Compatibility with other couplings in-use
- Low leak-oil rates, eco-friendly
- Low pressure drop





## Powerful quick release couplings, diagnostic connections, multi plates, and swivel connectors for Backhoe Loaders

ARGUS product range for backhoe loaders ensure efficient hydraulic tool changes and smooth system operation, handling high pressures, increased flow rates, and demanding workloads. They minimize downtime, oil leaks, and pressure losses, ensuring secure connections even under residual pressure. The addition of swivel connectors enhances hose durability and flexibility, reducing torsional stress and wear. Compliant with industry standards, this range offers versatility, durability, and reliability for earthmoving, material handling, and construction applications.

ARGUS products for backhoe loaders optimize hydraulic efficiency in demanding construction and earthmoving tasks. With customizable solutions, they withstand intensive workloads enhancing productivity and system longevity.

**SVK-ISO-A series.** Simple and efficient solution for coupling and uncoupling hydraulic lines. Featuring a poppet valve mechanism, they ensure secure, leak-free connections. Designed per ISO 7241-1, they are interchangeable across manufacturers, making them a versatile solution.

**SVK-1H ISO A series.** Compliant with ISO 7241 A standard, they feature break-away function, low-pressure drop, and one-hand push-pull operation. Designed to ensure secure, leak-free connections, they meet ISO 5675 and SAE J 1036, enhancing the efficiency and reliability of hydraulic systems, particularly in compact equipment.

**SPK-1H series.** Compliant with ISO 5675 and SAE J 1036, they offer one-hand push-pull operation, break-away function, and low-pressure drop. They allow secure and leak-free connection also under residual pressure while preventing unintentional disconnection from hydraulic backflow.

**FPK series.** The **FPK** quick release couplings enable efficient connection and disconnection of hydraulic lines in low or zero pressure ranges. Featuring automatic flow control and a safety system against accidental uncoupling, they ensure reliable performance. The **FPK P** series exhibits the same characteristics as the **FPK** range, but with the added advantage of connection under pressure.

**DK series.** Diagnostic couplings are specifically designed for pressure detection in oleo-hydraulic circuits, allowing a quick connection/disconnection of the measuring equipment.

**HDK series.** **HDK** high-pressure screw-type quick release couplings, compliant with ISO 14541, ensure robust construction and excellent flow rate. They provide secure connections under residual pressure up to 50 bar, and prevent unintentional disconnection. The **HDK HA** series exhibits characteristics common to the **HDK** range, yet it is specifically developed and designed for hammer application.

**RPV Series.** These quick release couplings provide a efficient solution for high-pressure hydraulic connections, ensuring secure, leak-free operations even in the presence of under static pressure. Their robust design enhances system durability and performance in demanding applications.

**Multi-K.** ARGUS multi-connection plates streamline the hydraulic line connection between the tractor and agricultural implements, ensuring efficiency, safety, and a compact design.

**Swivel Connectors.** The range provides a leak-free solution in demanding applications, ensuring smooth rotation under pressure while minimizing hose torsion and wear. Its bearing-less design enhances system durability and performance.





// SVK-1H-ISO-A

**Poppet valve**

- Compatible with ISO 7241-1-A, and with ISO 5675, and SAE J 1036
- Working pressure max 400 bar
- DN 6 to 25
- Break-away function
- One-hand push pull operation
- Pull-off couplings function
- Low pressure drop



// SPK-1H

**Poppet valve**

- Compatible with ISO 7241-1-A
- Working pressure 250 bar
- DN 13
- Connectable with male part under pressure
- Break-away function
- One-hand push pull operation
- Low pressure drop



// HDK & HDK HA

**Poppet valve**

- Compatible with ISO 14541
- Working pressure up to 450 bar
- DN 8 to 32
- Excellent flow rate with low pressure drop
- Leak-free performance for eco-friendly operation
- HDK HA for hammer application



// SVK-ISO-A

**Poppet valve**

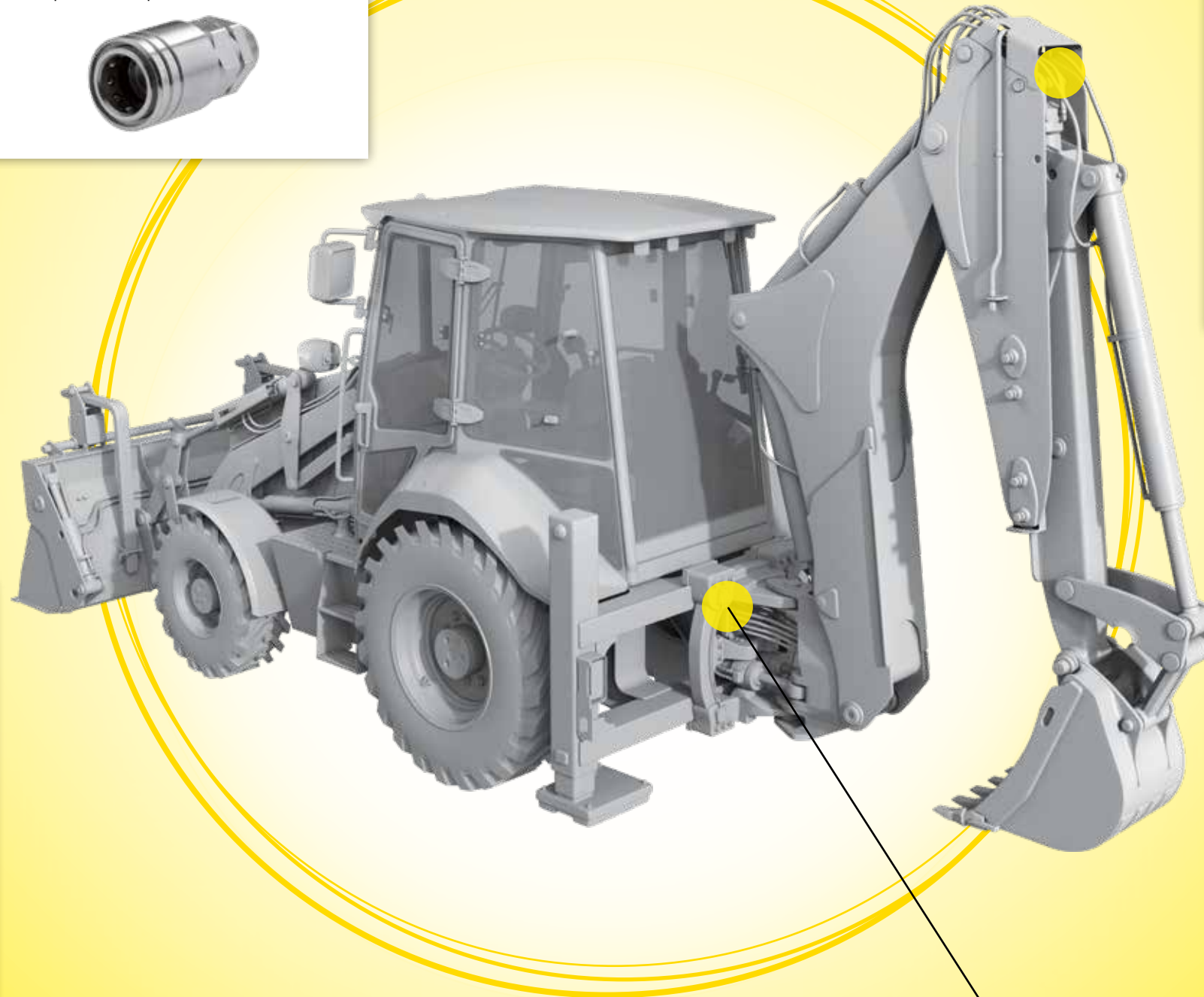
- Compatible with ISO 7241 A
- Working pressure max 350 bar
- DN 6 to 51
- Quick and simple coupling and uncoupling
- Cost-effective solution
- Rated flow and pressure drop compliant with ISO 7241-1



// SWIVEL CONNECTOR

**Poppet valve**

- Extremely low torque for rotation under pressure
- Working pressure up to 410 bar
- Compact and lightweight design for tight spaces
- Outstanding wear and corrosion resistance
- DN 10 to 51
- Long-lasting service life with minimal maintenance





// DK

**Flat face**

- Compatible with ISO 15171-1
- Working pressure 430 bar
- DN 6
- Compatibility with other couplings in-use
- Low leak-oil rates, eco-friendly
- Low pressure drop



// RPV

**Flat face**

- Max residual (static) pressure during connection/disconnection up to 30 MPa
- Working pressure 350 bar
- DN 6 to 16
- Easy-to-clean flat-face design
- Oil-leak-proof, environmentally friendly solution
- Jump-size available on request



// FPK & FPK P

**Flat face**

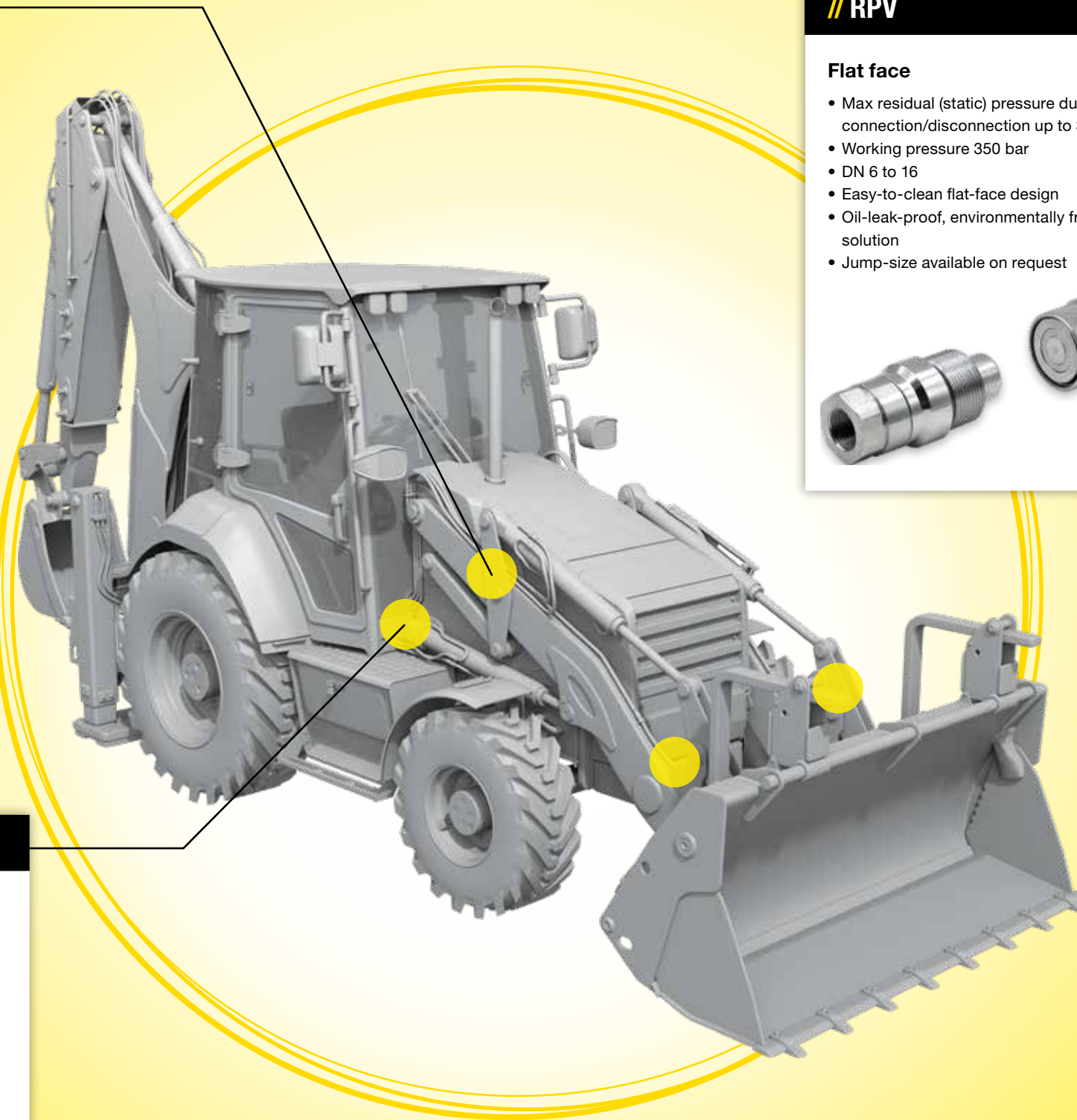
- Compatible with ISO 16028
- Working Pressure 350 bar
- DN 6 to 25
- Low leak-oil rates, eco-friendly
- Flow performance optimized by CFD
- FPK P version connectable under pressure



// MULTI-K

**Flat face**

- All types of thread configurations for hose connections
- DN 10 to 25
- Seal and back-up ring in NBR and PTFE
- Lock lever in steel with galvanic protection
- Safetely block in steel and aluminium
- Designed to meet customer specifications













# THE ALFAGOMMA GROUP

## **ALFAGOMMA**

**ARGENTINA – Buenos Aires**  
Moreno Store Center  
Belisario Roldán 2616 - CP. 1744  
La Reja - Bs. As.  
+54 (11) 5365-6062/6063

**AUSTRALIA – Sydney**  
50 Honeycomb Drive  
Eastern Creek  
Sydney, NSW 2766  
+61 (2) 98 53 09 00  
sydney@alfagomma.com.au

**BELGIUM & NETHERLANDS – Benelux**  
Z5 Mollem 340  
1730 Asse – Mollem  
+32 (2) 209 27 40  
info.benelux@alfagomma.com

**BRAZIL – Guaranésia**  
Rua Felice Gennasio 401  
Distrito Indl. Dr. Firmino Rocha de Freitas  
37810-000 - Guaranésia, MG - Brasil  
+55 (35) 35 55 0408  
contato@alfagomma.com.br

**CANADA – Montreal**  
6550 Abrams  
St. Laurent, Montreal  
Quebec H4S 1Y2  
+1 (514) 33 35 577  
info@alfagomma.ca

**CHINA – Ningbo**  
No. 1 Cidong South Avenue  
Coastal Economic Development Zone  
Cixi, Zhejiang, China 315311  
+86 (574) 88 15 72 88  
alfagomma.china@alfagomma.com.cn

**FRANCE – Villepinte**  
Le Sisley – Parc d'activité Paris Nord 2  
23 Allée des Impressionnistes  
93420 Villepinte  
+33 (1) 48172121  
agfrance.info@alfagomma.com

**GERMANY – Herne**  
Friedrich der Grosse 10  
44628 Herne  
+49 (2323) 14 730  
info.germany@alfagomma.com

**GREECE – Athens**  
85 Kifissou Avenue  
12241 Aigaleo, Athens  
+30 (210) 41 19 909  
info.hellas@alfagomma.com

**INDONESIA – Tangerang**  
Jalan Raya Serang km. 16  
Sukamulya Cikupa  
Tangerang Banten 15710  
+62 (21) 59 66 4792  
jakarta@alfagomma.co.id

**ITALY – Vimercate**  
Via Torri Bianche 1  
20871 Vimercate (MB)  
+39 (039) 60 161  
info@alfagomma.com

**MALAYSIA – Pasir Gudang**  
Plo 405, Jalan Perak 4  
81707 Pasir Gudang  
Negeri Johor Darul Takzim  
+60 (7) 25 72 000  
alfagomma@alfagomma.com.my

**MEXICO – Torreón**  
Av. Industria de la transformacion  
Parque Pymes 585  
27400 Torreón, Coahuila  
+52 8713125026  
alfagomma.mexico@alfagomma.com

**SINGAPORE**  
14 Tuas Ave 11  
Singapore 639080  
+65 6360 9000  
alfagomma@alfagomma.com.sg

**SOUTH AFRICA – Johannesburg**  
17 Quark Crescent Linbro Business Park  
Sandton 2065  
+27 (11) 20 10 900  
alfagomma@alfagomma.co.za

**SOUTH KOREA – Hwasung**  
15 Julteo Gil  
Yangkam-Myun, Hwasung-Si  
Kyungki-Do 18630  
+82 (31) 35 28 671  
alfagomma@alfagomma.co.kr

**THAILAND – Bangkok**  
60/21 Moo.4 King Kaew Road  
Racha Thewa SubDistrict, Bang Phli District  
Samut Prakan Province, 10540  
+66 (0) 2 136 2388  
sales@alfagomma.co.th

**UNITED KINGDOM – Haydock**  
43 Wilcock Road  
Old Boston Trading Estate Haydock  
St. Helens WA11 9TG  
+44 (1942) 40 76 80  
haydock.sales@alfagomma.com

**UNITED STATES OF AMERICA – Burlington**  
3520 West Avenue  
IA 52601 Burlington  
+1 (319) 75 89 224  
info@alfagomma.us

## **DUNLOPHIFLEX**

**DENMARK – Kolding**  
Kokholm 5  
6000 Kolding  
+45 43 25 40 00  
kundeservice@dunlophiflex.dk

**ESTONIA – Tallin**  
Läike tee 32/1 - Peetri alevik,  
Rae vald - 75312 Harjumaa (Tallinn)  
+372 (0) 605 4900  
tallinn@dunlophiflex.ee

**FINLAND – Pirkkala**  
Jasperintie 320  
33960 Pirkkala  
+358 (207) 625 700  
info@dunlophiflex.fi

**NORWAY – Kjeller**  
Jogstadveien 39  
Pb. 7, 2027 Kjeller  
2007 Kjeller  
+47 23 00 47 00  
sales@dunlophiflex.no

**SWEDEN – Halmstad**  
Kistinge Industriområde  
Seldonsvagen 2  
30180 Halmstad  
+46 (104) 14 44 04  
halmstad@dunlophiflex.se

## **ARGUS**

**GERMANY – Ettlingen**  
Pforzheimer Str. 126  
76275 Ettlingen  
+49 (7243) 50 550  
info@argus-fluidtechnik.de

**UNITED KINGDOM – Salisbury**  
Telford Road  
Salisbury, Wiltshire SP2 7PH  
+44 (1722) 42 05 90  
sales@hiflex-europe.com

## **KIOWA**

**UNITED KINGDOM – Sleaford**  
Kiowa Ltd, The Reservation, East Road  
Sleaford, Lincolnshire, NG34 7BY  
+44 (0) 1529 416200  
sales@kiowa.co.uk



**HEADQUARTER**  
**Alfagomma SpA**  
Via Torri Bianche 1  
20871 Vimercate (MB) Italy  
marketing@alfagomma.com  
www.alfagomma.com