

ALFAGOMMA

**AGJOINT
RUBBER EXPANSION JOINTS**



// AGJOINT – RUBBER EXPANSION JOINTS RANGE

Alfagomma AGJoint range includes **highly engineered rubber expansion joints**, employed as flexible connectors in all systems transferring fluids, slurries, or gases to safely absorb all directional movements, relieve stress, and insulate vibration and noise in the pipelines.

The excellence of AGJoint products comes from the **cutting-edge industrial designing, high-performance production process and top-quality polymers combination**. The result is a cost-effective solution that can be tailor-made to customer's needs.

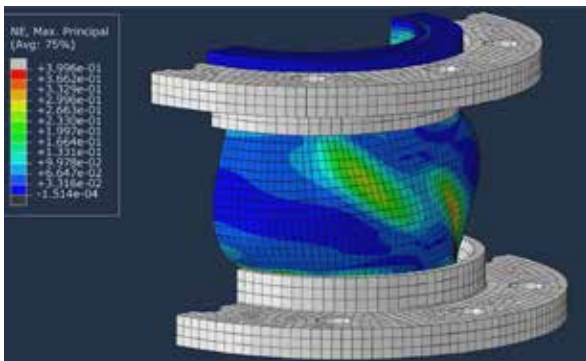
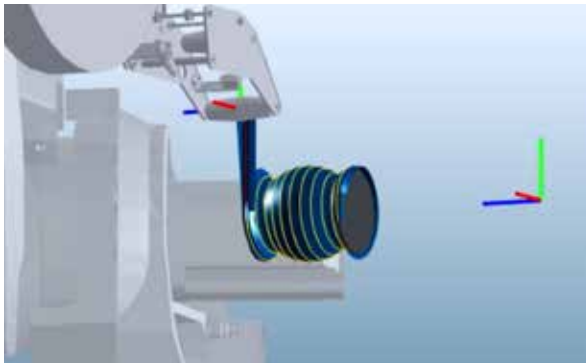
The range includes autostable, single and double bellow joints, especially developed to be used widely in most industrial plants and (to) meet the demand of customers operating in various industries, such as naval and shipbuilding, chemical and petrochemical, Oil & Gas, energy & power generation, food & beverages, and HVAC sector.



// ADVANCED DESIGNING AND MANUFACTURING TECHNOLOGY

AGJoint range is the result of a **multi-step industrial process** that involves the conversion of top-quality raw materials into finished rubber expansion joints, by combining sophisticated **software for modelling**, analysis and simulation to **robotic technology production**.

- Design and Analysis Platform:** using leading-edge technology software, the final product is prior designed in a digital environment, developing customized projects and tailor-made solutions. The software combines designing to virtual product FEA analysis to test the product behavior subject to various workloads such as traction, compression, and lateral offset, or to optimise different shapes and models. The digital environment designing enables time and costs reduction in prototyping and testing stages.
- Virtual Simulation:** Once the final product is digitally designed and the virtual model ready, the software platform allows for a computerized simulation to mimic the robotic production process, with the advantage of predict and resolve any inaccuracies, fulfil additional requests, or implement modifications if necessary.
- High-tech Robotic manufacturing:** robotics production technology ensures reliability of the final products, according to the requirements set. The robotic arm combines the layers of material fast and accurately, based on the data verified in the virtual simulation of the production process. The resulting product delivers the required characteristics without wasting raw material and human errors, in a short lead time. This manufacturing technology also enables production in both series and small batches.



// QUALITY & APPROVALS

The AGJoint range is the result of over 60 years of Alfagomma's experience in rubber compound production and processing. Our R&D laboratory has developed a series of compounds perfectly suited for fluids conveyed on board, including hydrocarbons and air, cooling water and potable water (in accordance with Italian D.M.174 dated 06/04/2004 for fresh/potable water delivery).

The AGJoint range has undergone strict testing in the Alfagomma internal quality control department, which operates under ISO 9001 and internal quality procedures. Subsequently, all the tests have been carried out in the relevant accredited laboratories in order to obtain: the RINA Marine Type Approval (TAC), the compliance to European Marine Equipment Directive (MED), the ability of shipboard installations to withstand shock loadings (acc. to MIL-S-901), and the IT Navy CSSN Qualification (acc. to NAV-70-9999-0028-14-00B000).

AGJoint rubber expansion joints range meets the strict military standards required by shipbuilding companies for new naval units and refits.

TOP-QUALITY AND RELIABLE SOLUTION

- **SINGLE SOURCE INTEGRATED SYSTEM SUPPLIER**
- ASSEMBLY AND TESTING (ISO 9001)
- **RINA TYPE APPROVAL** FOR MARINE REQUIREMENTS (TAC)
- EUROPEAN **MARINE EQUIPMENT DIRECTIVE** (MED)
- HIGH-IMPACT SHIPBOARD MACHINERY **SHOCK TEST** (MIL-S-901)
- IT NAVY CSSN QUALIFICATION (**NAV-70-9999-0028-14-00B000**)



// AGJOINT AUTO



DN32 ÷ DN300



to max WP 16 bar

// Wide arch body
// Swivel flanges

General features: AGJoint Auto have been developed by Alfagomma R&D department to meet a specific requirement by main customers of the maritime military industry: the highest range of movements in combination with the highest autostability.

The innovative technology of reinforcement and the special design of the rubberized collar ensure top-level performance in terms of movements among swivel flange joints available on the market, especially under lateral deflection strain.

The very limited axial elongation under pressure (autostability) let AGJoint Auto be the perfect item to be installed in a piping system that is free to move, due to few fixing points, without applying forces on nearby equipment, to the point that tie rods (stroke limiters) are no longer necessary.

Liner: black NBR / white NBR* / EPDM

Reinforcement: rubberized textile cords

Cover: black CR

Application: oil, fuel, kerosene, aviation fuels, compressed air, water, water with chemical additives, waste water, seawater, drinking water

Constant operation: -30°C +100°C

Safety factor: 4:1

Norm: EN ISO 15540 with flame-proof guard

Product certifications:

- Marine Type Approval (RINA)
- MED Directive compliance (RINA)
- IT Navy Qualification (CSSN)

Note: Other sizes and materials available on request.

Specific instructions for installation, use and maintenance are separately provided.

*in accordance to Italian D.M.174 dated 06/04/2004 for fresh/potable water delivery

Design and dimensions shown may be changed without prior notice



// AGJOINT AUTO

Swivel flange – EN 1092-1 PN 16 – Plated steel

Product Code	DN (in)	DN (mm)	Length (mm)	WP (bar)	WP (psi)	BP (bar)	BP (psi)	Axial elongation (mm)	Axial compress. (mm)	Lateral deflection (mm)	Angular deflection (mm)	Torsional deflection (mm)	Weight (kg)	Weight (lb)
GE412BD10-032150	1"1/4	32	150	16	240	64	960	30	30	30	30	10	3,1	6,9
GE412BD10-040150	1"1/2	40	150	16	240	64	960	30	30	30	30	10	3,6	7,8
GE412BD10-050150	2"	50	150	16	240	64	960	30	30	30	30	10	4,3	9,5
GE412BD10-065150	2"1/2	65	150	16	240	64	960	30	30	30	25	10	5,0	11,0
GE412BD10-080150	3"	80	150	16	240	64	960	30	30	30	25	10	5,7	12,6
GE412BD10-100150	4"	100	150	16	240	64	960	30	30	30	20	10	7,3	16,0
GE412BD10-125150	5"	125	150	16	240	64	960	30	30	30	20	5	8,9	19,7
GE412BD10-150150	6"	150	150	16	240	64	960	30	30	30	15	5	11,9	26,2
GE412BD10-200150	8"	200	150	16	240	64	960	30	30	30	15	5	15,6	34,3
GE412BD10-250150	10"	250	150	16	240	64	960	30	30	30	10	5	23,6	51,8
GE412BD10-300200	12"	300	200	16	240	64	960	30	30	30	10	5	29,1	64,0

Also available in 130, 160, 200 mm - lengths on request

// AGJOINT AUTO

Swivel flange – EN 1092-1 PN 16 – Stainless steel 316

Product Code	DN (in)	DN (mm)	Length (mm)	WP (bar)	WP (psi)	BP (bar)	BP (psi)	Axial elongation (mm)	Axial compress. (mm)	Lateral deflection (mm)	Angular deflection (mm)	Torsional deflection (mm)	Weight (kg)	Weight (lb)
GE412BD30-032150	1"1/4	32	150	16	240	64	960	30	30	30	30	10	3,1	6,9
GE412BD30-040150	1"1/2	40	150	16	240	64	960	30	30	30	30	10	3,6	7,8
GE412BD30-050150	2"	50	150	16	240	64	960	30	30	30	30	10	4,3	9,5
GE412BD30-065150	2"1/2	65	150	16	240	64	960	30	30	30	25	10	5,0	11,0
GE412BD30-080150	3"	80	150	16	240	64	960	30	30	30	25	10	5,7	12,6
GE412BD30-100150	4"	100	150	16	240	64	960	30	30	30	20	10	7,3	16,0
GE412BD30-125150	5"	125	150	16	240	64	960	30	30	30	20	5	8,9	19,7
GE412BD30-150150	6"	150	150	16	240	64	960	30	30	30	15	5	11,9	26,2
GE412BD30-200150	8"	200	150	16	240	64	960	30	30	30	15	5	15,6	34,3
GE412BD30-250150	10"	250	150	16	240	64	960	30	30	30	10	5	23,6	51,8
GE412BD30-300200	12"	300	200	16	240	64	960	30	30	30	10	5	29,1	64,0

Also available in 130, 160, 200 mm - lengths on request



// AGJOINT AUTO

Swivel flange – EN 1092-1 PN 6 – Plated steel

Product Code	DN (in)	DN (mm)	Lenght (mm)	WP (bar)	WP (psi)	BP (bar)	BP (psi)	Axial elongation (mm)	Axial compress. (mm)	Lateral deflection (mm)	Angular deflection (mm)	Torsional deflection (mm)	Weight (kg)	Weight (lb)
GE412BB10-032150	1"1/4	32	150	6	90	24	360	30	30	30	30	10	3,0	6,6
GE412BB10-040150	1"1/2	40	150	6	90	24	360	30	30	30	30	10	3,4	7,5
GE412BB10-050150	2"	50	150	6	90	24	360	30	30	30	30	10	4,2	9,2
GE412BB10-065150	2"1/2	65	150	6	90	24	360	30	30	30	25	10	4,8	10,6
GE412BB10-080150	3"	80	150	6	90	24	360	30	30	30	25	10	5,5	12,2
GE412BB10-100150	4"	100	150	6	90	24	360	30	30	30	20	10	7,0	15,4
GE412BB10-125150	5"	125	150	6	90	24	360	30	30	30	20	5	8,6	19,0
GE412BB10-150150	6"	150	150	6	90	24	360	30	30	30	15	5	11,5	25,3
GE412BB10-200150	8"	200	150	6	90	24	360	30	30	30	15	5	15,0	33,1
GE412BB10-250150	10"	250	150	6	90	24	360	30	30	30	10	5	22,7	49,9
GE412BB10-300200	12"	300	200	6	90	24	360	30	30	30	10	5	28,1	61,8

Also available in 130, 160, 200 mm - lengths on request

// AGJOINT AUTO

Swivel flange – EN 1092-1 PN 6 – Stainless steel 316

Product Code	DN (in)	DN (mm)	Lenght (mm)	WP (bar)	WP (psi)	BP (bar)	BP (psi)	Axial elongation (mm)	Axial compress. (mm)	Lateral deflection (mm)	Angular deflection (mm)	Torsional deflection (mm)	Weight (kg)	Weight (lb)
GE412BB30-032150	1"1/4	32	150	6	90	24	360	30	30	30	30	10	3,0	6,6
GE412BB30-040150	1"1/2	40	150	6	90	24	360	30	30	30	30	10	3,4	7,5
GE412BB30-050150	2"	50	150	6	90	24	360	30	30	30	30	10	4,2	9,2
GE412BB30-065150	2"1/2	65	150	6	90	24	360	30	30	30	25	10	4,8	10,6
GE412BB30-080150	3"	80	150	6	90	24	360	30	30	30	25	10	5,5	12,2
GE412BB30-100150	4"	100	150	6	90	24	360	30	30	30	20	10	7,0	15,4
GE412BB30-125150	5"	125	150	6	90	24	360	30	30	30	20	5	8,6	19,0
GE412BB30-150150	6"	150	150	6	90	24	360	30	30	30	15	5	11,5	25,3
GE412BB30-200150	8"	200	150	6	90	24	360	30	30	30	15	5	15,0	33,1
GE412BB30-250150	10"	250	150	6	90	24	360	30	30	30	10	5	22,7	49,9
GE412BB30-300200	12"	300	200	6	90	24	360	30	30	30	10	5	28,1	61,8

Also available in 130, 160, 200 mm - lengths on request

Design and dimensions shown may be changed without prior notice

// AGJOINT PRO



DN32 ÷ DN300



to max WP 16 bar

// Spool arch body
// Full flanges

General features: AGJoint Pro have represented the benchmark of the category of rubber expansion joints for the maritime military industry for years, before the introduction of the innovative AGJoint Auto series.

Even today, in case of extreme requirements of lateral deflection combined to vacuum resistance - also at extended temperatures - AGJoint Pro is the best solution available on the market.

The double arch version allows greater movements compared to the single arch, and the full flanges provide an excellent seal on any piping interface.

Metallic split flanges act as backing rings, so that bolts and nuts can be appropriately tightened.

Liner: black NBR / white NBR* / EPDM

Reinforcement: rubberized textile cords

Cover: black CR

Application: oil, fuel, kerosene, aviation fuels, compressed air, water, water with chemical additives, waste water, seawater, drinking water

Constant operation: -30°C +100°C

Safety factor: 4:1

Norm: EN ISO 15540 with flame-proof guard

Product certifications:

- Marine Type Approval (RINA)
- MED Directive compliance (RINA)
- IT Navy Qualification (CSSN)

Note: Other sizes and materials available on request.

Specific instructions for installation, use and maintenance are separately provided.

*in accordance to Italian D.M.174 dated 06/04/2004 for fresh/potable water delivery



// AGJOINT PRO - SINGLE BELLOW

Fixed flange – EN 1092-1 PN 16 – Plated steel

Product Code	DN (in)	DN (mm)	Lenght (mm)	WP (bar)	WP (psi)	BP (bar)	BP (psi)	Axial elongation (mm)	Axial compress. (mm)	Lateral deflection (mm)	Angular deflection (mm)	Torsional deflection (mm)	Weight (kg)	Weight (lb)
GE011BD10-032150	1"1/4	32	150	16	240	64	960	30	30	30	30	10	2,7	6,0
GE011BD10-040150	1"1/2	40	150	16	240	64	960	30	30	30	30	10	3,1	6,9
GE011BD10-050150	2"	50	150	16	240	64	960	30	30	30	30	10	3,8	8,3
GE011BD10-065150	2"1/2	65	150	16	240	64	960	30	30	30	25	10	4,1	9,1
GE011BD10-080150	3"	80	150	16	240	64	960	30	30	30	25	10	4,9	10,8
GE011BD10-100150	4"	100	150	16	240	64	960	30	30	30	20	10	5,5	12,0
GE011BD10-125150	5"	125	150	16	240	64	960	30	30	30	20	5	6,9	15,1
GE011BD10-150150	6"	150	150	16	240	64	960	30	30	30	15	5	8,8	19,4
GE011BD10-200190	8"	200	190	16	240	64	960	30	30	30	15	5	12,6	27,7
GE011BD10-250200	10"	250	200	16	240	64	960	30	30	30	10	5	17,5	38,6
GE011BD10-300200	12"	300	200	16	240	64	960	30	30	30	10	5	24,6	54,1

// AGJOINT PRO - SINGLE BELLOW

Fixed flange – EN 1092-1 PN 16 – Stainless steel 316

Product Code	DN (in)	DN (mm)	Lenght (mm)	WP (bar)	WP (psi)	BP (bar)	BP (psi)	Axial elongation (mm)	Axial compress. (mm)	Lateral deflection (mm)	Angular deflection (mm)	Torsional deflection (mm)	Weight (kg)	Weight (lb)
GE011BD30-032150	1"1/4	32	150	16	240	64	960	30	30	30	30	10	2,7	6,0
GE011BD30-040150	1"1/2	40	150	16	240	64	960	30	30	30	30	10	3,1	6,9
GE011BD30-050150	2"	50	150	16	240	64	960	30	30	30	30	10	3,8	8,3
GE011BD30-065150	2"1/2	65	150	16	240	64	960	30	30	30	25	10	4,1	9,1
GE011BD30-080150	3"	80	150	16	240	64	960	30	30	30	25	10	4,9	10,8
GE011BD30-100150	4"	100	150	16	240	64	960	30	30	30	20	10	5,5	12,0
GE011BD30-125150	5"	125	150	16	240	64	960	30	30	30	20	5	6,9	15,1
GE011BD30-150150	6"	150	150	16	240	64	960	30	30	30	15	5	8,8	19,4
GE011BD30-200190	8"	200	190	16	240	64	960	30	30	30	15	5	12,6	27,7
GE011BD30-250200	10"	250	200	16	240	64	960	30	30	30	10	5	17,5	38,6
GE011BD30-300200	12"	300	200	16	240	64	960	30	30	30	10	5	24,6	54,1

Design and dimensions shown may be changed without prior notice

**// AGJOINT PRO - SINGLE BELLOW****Fixed flange – EN 1092-1 PN 6 – Plated steel**

Product Code	DN (in)	DN (mm)	Lenght (mm)	WP (bar)	WP (psi)	BP (bar)	BP (psi)	Axial elongation (mm)	Axial compress. (mm)	Lateral deflection (mm)	Angular deflection (mm)	Torsional deflection (mm)	Weight (kg)	Weight (lb)
GE011BB10-032150	1"1/4	32	150	6	90	24	360	30	30	30	30	10	2,7	5,9
GE011BB10-040150	1"1/2	40	150	6	90	24	360	30	30	30	30	10	3,0	6,7
GE011BB10-050150	2"	50	150	6	90	24	360	30	30	30	30	10	3,6	8,0
GE011BB10-065150	2"1/2	65	150	6	90	24	360	30	30	30	25	10	4,0	8,8
GE011BB10-080150	3"	80	150	6	90	24	360	30	30	30	25	10	4,8	10,5
GE011BB10-100150	4"	100	150	6	90	24	360	30	30	30	20	10	5,3	11,7
GE011BB10-125150	5"	125	150	6	90	24	360	30	30	30	20	5	6,7	14,7
GE011BB10-150150	6"	150	150	6	90	24	360	30	30	30	15	5	8,4	18,5
GE011BB10-200190	8"	200	190	6	90	24	360	30	30	30	15	5	11,9	26,2
GE011BB10-250200	10"	250	200	6	90	24	360	30	30	30	10	5	16,1	35,5
GE011BB10-300200	12"	300	200	6	90	24	360	30	30	30	10	5	23,1	50,8

// AGJOINT PRO - SINGLE BELLOW**Fixed flange – EN 1092-1 PN 6 – Stainless steel 316**

Product Code	DN (in)	DN (mm)	Lenght (mm)	WP (bar)	WP (psi)	BP (bar)	BP (psi)	Axial elongation (mm)	Axial compress. (mm)	Lateral deflection (mm)	Angular deflection (mm)	Torsional deflection (mm)	Weight (kg)	Weight (lb)
GE011BB30-032150	1"1/4	32	150	6	90	24	360	30	30	30	30	10	2,7	5,9
GE011BB30-040150	1"1/2	40	150	6	90	24	360	30	30	30	30	10	3,0	6,7
GE011BB30-050150	2"	50	150	6	90	24	360	30	30	30	30	10	3,6	8,0
GE011BB30-065150	2"1/2	65	150	6	90	24	360	30	30	30	25	10	4,0	8,8
GE011BB30-080150	3"	80	150	6	90	24	360	30	30	30	25	10	4,8	10,5
GE011BB30-100150	4"	100	150	6	90	24	360	30	30	30	20	10	5,3	11,7
GE011BB30-125150	5"	125	150	6	90	24	360	30	30	30	20	5	6,7	14,7
GE011BB30-150150	6"	150	150	6	90	24	360	30	30	30	15	5	8,4	18,5
GE011BB30-200190	8"	200	190	6	90	24	360	30	30	30	15	5	11,9	26,2
GE011BB30-250200	10"	250	200	6	90	24	360	30	30	30	10	5	16,1	35,5
GE011BB30-300200	12"	300	200	6	90	24	360	30	30	30	10	5	23,1	50,8



// AGJOINT PRO - DOUBLE BELLOW

Fixed flange – EN 1092-1 PN 16 – Plated steel

Product Code	DN (in)	DN (mm)	Lenght (mm)	WP (bar)	WP (psi)	BP (bar)	BP (psi)	Axial elongation (mm)	Axial compress. (mm)	Lateral deflection (mm)	Angular deflection (mm)	Torsional deflection (mm)	Weight (kg)	Weight (lb)
GE711BD10-040200	1"1/2	40	200	16	240	64	960	30	30	30	30	10	3,3	7,3
GE711BD10-050200	2"	50	200	16	240	64	960	30	30	30	30	10	4,0	8,8
GE711BD10-065220	2"1/2	65	220	16	240	64	960	30	30	30	25	10	4,4	9,6
GE711BD10-080220	3"	80	220	16	240	64	960	30	30	30	25	10	5,2	11,5
GE711BD10-100220	4"	100	220	16	240	64	960	30	30	30	20	10	5,8	12,8
GE711BD10-125220	5"	125	220	16	240	64	960	30	30	30	20	5	7,3	16,1
GE711BD10-150220	6"	150	220	16	240	64	960	30	30	30	15	5	9,4	20,7
GE711BD10-200220	8"	200	220	16	240	64	960	30	30	30	15	5	13,5	29,8
GE711BD10-250220	10"	250	220	16	240	64	960	30	30	30	10	5	18,9	41,6
GE711BD10-300220	12"	300	220	16	240	64	960	30	30	30	10	5	26,7	58,8

// AGJOINT PRO - DOUBLE BELLOW

Fixed flange – EN 1092-1 PN 16 – Stainless steel 316

Product Code	DN (in)	DN (mm)	Lenght (mm)	WP (bar)	WP (psi)	BP (bar)	BP (psi)	Axial elongation (mm)	Axial compress. (mm)	Lateral deflection (mm)	Angular deflection (mm)	Torsional deflection (mm)	Weight (kg)	Weight (lb)
GE711BD30-040200	1"1/2	40	200	16	240	64	960	30	30	30	30	10	3,3	7,3
GE711BD30-050200	2"	50	200	16	240	64	960	30	30	30	30	10	4,0	8,8
GE711BD30-065220	2"1/2	65	220	16	240	64	960	30	30	30	25	10	4,4	9,6
GE711BD30-080220	3"	80	220	16	240	64	960	30	30	30	25	10	5,2	11,5
GE711BD30-100220	4"	100	220	16	240	64	960	30	30	30	20	10	5,8	12,8
GE711BD30-125220	5"	125	220	16	240	64	960	30	30	30	20	5	7,3	16,1
GE711BD30-150220	6"	150	220	16	240	64	960	30	30	30	15	5	9,4	20,7
GE711BD30-200220	8"	200	220	16	240	64	960	30	30	30	15	5	13,5	29,8
GE711BD30-250220	10"	250	220	16	240	64	960	30	30	30	10	5	18,9	41,6
GE711BD30-300220	12"	300	220	16	240	64	960	30	30	30	10	5	26,7	58,8

Design and dimensions shown may be changed without prior notice



// AGJOINT PRO - DOUBLE BELLOW

Fixed flange – EN 1092-1 PN 6 – Plated steel

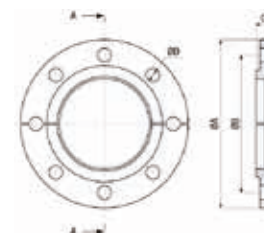
Product Code	DN (in)	DN (mm)	Lenght (mm)	WP (bar)	WP (psi)	BP (bar)	BP (psi)	Axial elongation (mm)	Axial compress. (mm)	Lateral deflection (mm)	Angular deflection (mm)	Torsional deflection (mm)	Weight (kg)	Weight (lb)
GE711BB10-040200	1"1/2	40	200	6	90	24	360	30	30	30	30	10	3,2	7,1
GE711BB10-050200	2"	50	200	6	90	24	360	30	30	30	30	10	3,9	8,5
GE711BB10-065220	2"1/2	65	220	6	90	24	360	30	30	30	25	10	4,3	9,4
GE711BB10-080220	3"	80	220	6	90	24	360	30	30	30	25	10	5,1	11,2
GE711BB10-100220	4"	100	220	6	90	24	360	30	30	30	20	10	5,7	12,5
GE711BB10-125220	5"	125	220	6	90	24	360	30	30	30	20	5	7,1	15,7
GE711BB10-150220	6"	150	220	6	90	24	360	30	30	30	15	5	9,0	19,8
GE711BB10-200220	8"	200	220	6	90	24	360	30	30	30	15	5	12,8	28,3
GE711BB10-250220	10"	250	220	6	90	24	360	30	30	30	10	5	17,5	38,5
GE711BB10-300220	12"	300	220	6	90	24	360	30	30	30	10	5	25,2	55,5

// AGJOINT PRO - DOUBLE BELLOW

Fixed flange – EN 1092-1 PN 6 – Stainless steel 316

Product Code	DN (in)	DN (mm)	Lenght (mm)	WP (bar)	WP (psi)	BP (bar)	BP (psi)	Axial elongation (mm)	Axial compress. (mm)	Lateral deflection (mm)	Angular deflection (mm)	Torsional deflection (mm)	Weight (kg)	Weight (lb)
GE711BB30-040200	1"1/2	40	200	6	90	24	360	30	30	30	30	10	3,2	7,1
GE711BB30-050200	2"	50	200	6	90	24	360	30	30	30	30	10	3,9	8,5
GE711BB30-065220	2"1/2	65	220	6	90	24	360	30	30	30	25	10	4,3	9,4
GE711BB30-080220	3"	80	220	6	90	24	360	30	30	30	25	10	5,1	11,2
GE711BB30-100220	4"	100	220	6	90	24	360	30	30	30	20	10	5,7	12,5
GE711BB30-125220	5"	125	220	6	90	24	360	30	30	30	20	5	7,1	15,7
GE711BB30-150220	6"	150	220	6	90	24	360	30	30	30	15	5	9,0	19,8
GE711BB30-200220	8"	200	220	6	90	24	360	30	30	30	15	5	12,8	28,3
GE711BB30-250220	10"	250	220	6	90	24	360	30	30	30	10	5	17,5	38,5
GE711BB30-300220	12"	300	220	6	90	24	360	30	30	30	10	5	25,2	55,5

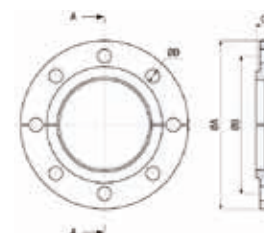
// FLANGE CHOICE



// AGJOINT AUTO

Swivel flange – EN 1092-1 PN 16

DN	ØA	ØB	C	ØD	Weight (kg)	Weight (lb)
32	140	100	18	18	1,3	2,9
40	150	110	18	18	1,5	3,3
50	165	125	18	18	1,8	3,9
65	185	145	18	18	2,0	4,3
80	200	160	20	18	2,3	5,1
100	220	180	20	18	3,0	6,6
125	250	210	22	18	3,6	8,0
150	285	240	22	22	4,7	10,3
200	340	295	24	22	6,1	13,4
250	405	355	26	26	9,7	21,2
300	460	410	28	26	11,1	24,4

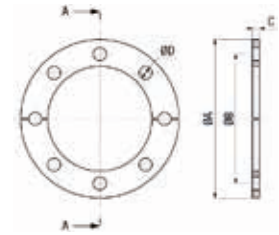


// AGJOINT AUTO

Swivel flange – EN 1092-1 PN 6

DN	ØA	ØB	C	ØD	Weight (kg)	Weight (lb)
32	120	90	14	14	1,2	2,7
40	130	100	14	14	1,4	3,1
50	140	110	14	14	1,7	3,8
65	160	130	14	14	1,9	4,1
80	190	150	16	18	2,2	4,9
100	210	170	16	18	2,9	6,3
125	240	200	18	18	3,5	7,7
150	265	225	18	18	4,5	9,9
200	320	280	20	18	5,8	12,8
250	375	335	22	18	9,2	20,3
300	440	395	22	22	10,6	23,3

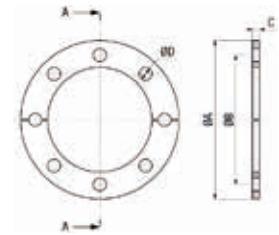
Design and dimensions shown may be changed without prior notice



// AGJOINT PRO

Fixed flange – EN 1092-1 PN 16

DN	ØA	ØB	C	ØD	Weight (kg)	Weight (lb)
32	140	100	10	18	0,8	1,8
40	150	110	10	18	1,0	2,1
50	165	125	10	18	1,1	2,3
65	185	145	10	18	1,2	2,6
80	200	160	10	18	1,4	3,0
100	220	180	10	18	1,5	3,3
125	250	210	10	18	1,9	4,2
150	285	240	10	22	2,3	5,1
200	340	295	10	22	2,9	6,4
250	405	355	10	26	3,9	8,5
300	460	410	10	26	4,7	10,4



// AGJOINT PRO

Fixed flange – EN 1092-1 PN 6

DN	ØA	ØB	C	ØD	Weight (kg)	Weight (lb)
32	120	90	10	14	0,8	1,7
40	130	100	10	14	0,9	2,0
50	140	110	10	14	1,0	2,2
65	160	130	10	14	1,1	2,5
80	190	150	10	18	1,3	2,8
100	210	170	10	18	1,4	3,2
125	240	200	10	18	1,8	4,0
150	265	225	10	18	2,1	4,6
200	320	280	10	18	2,6	5,6
250	375	335	10	18	3,2	6,9
300	440	395	10	22	4,0	8,8

// ACCESSORIES

// ANTI-FLAME INSULATION COVER



Structure: made of several layers of fireproof materials.

Installation: to be installed around the rubber expansion joint. Thanks to its split design, it can be mounted subsequently and easily re-opened for any inspection.

Available in standard size (to accommodate expansion joint only) or large size (to accommodate expansion joints with tie rods).

Application: it provides protection against heat and flames up to +800 °C (+1472 °F) for 30 minutes.

Compliant to ISO 15540.

The assembly with anti-flame cover is fully compliant to the Marine Equipment Directive (MED) 2014/90/EU.

// TIE RODS AND LIMITERS



Structure: made of aluminum and AISI316 stainless steel.

Installation: to be installed around the rubber expansion joint. They can be mounted subsequently and easily removed for any inspection or replacement activity of the expansion joint.

Available in standard length (for single bellow expansion joint) or increased length (for double bellow expansion joint).

Application: they can limit the axial movements of the joint.

They are mainly used to absorb the reaction forces generated by the working pressure in a piping system that is free to move, due to few fixing points, without applying forces on nearby equipment.

AGJoint Auto (autostable type) does not require tie rods.

// VACUUM RINGS



Structure: made of AISI316 stainless steel.

Installation: to be installed inside the rubber expansion joint. It can be mounted subsequently and easily removed for any inspection or replacement activity of the expansion joint.

The size and the thickness of the ring may vary for each DN.

Application: it provides resistance up to full vacuum (100%).

// ALFATRACA HOSE MANAGEMENT SYSTEM

AlfaTraka is a cloud-based hose assembly tracking system available to all customers worldwide, and developed to maintain and prevent hose assembly break downs.

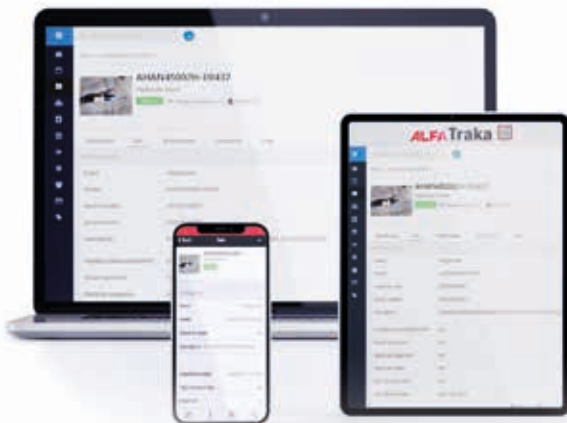
ALFATRACA HELPS TO SUPPORT PARTNERS' HOSE MANAGEMENT PLAN AND IT CAN ASSIST WITH

- Regularly reviewing the life cycle and safety of your hose assembly
- Tracing the components, assembly, and installation of your hose assembly and fittings
- Making informed and safe decisions utilizing the service schedule function
- Conforming with statutory requirements and best industry practices
- Setting up a range of automated tasks with flags and reminders

ALFATraka

The data relating to the assembly is uploaded to AlfaTraka in the workshop. All of the **single product information is available from a label placed on the assembly** which includes the hose assembly QR code.

For more info visit: www.alfatraka.com



The AlfaTraka application (APP) is available for smart devices and can be found in the Google Play Store for Android devices and the APP Store for iOS devices.

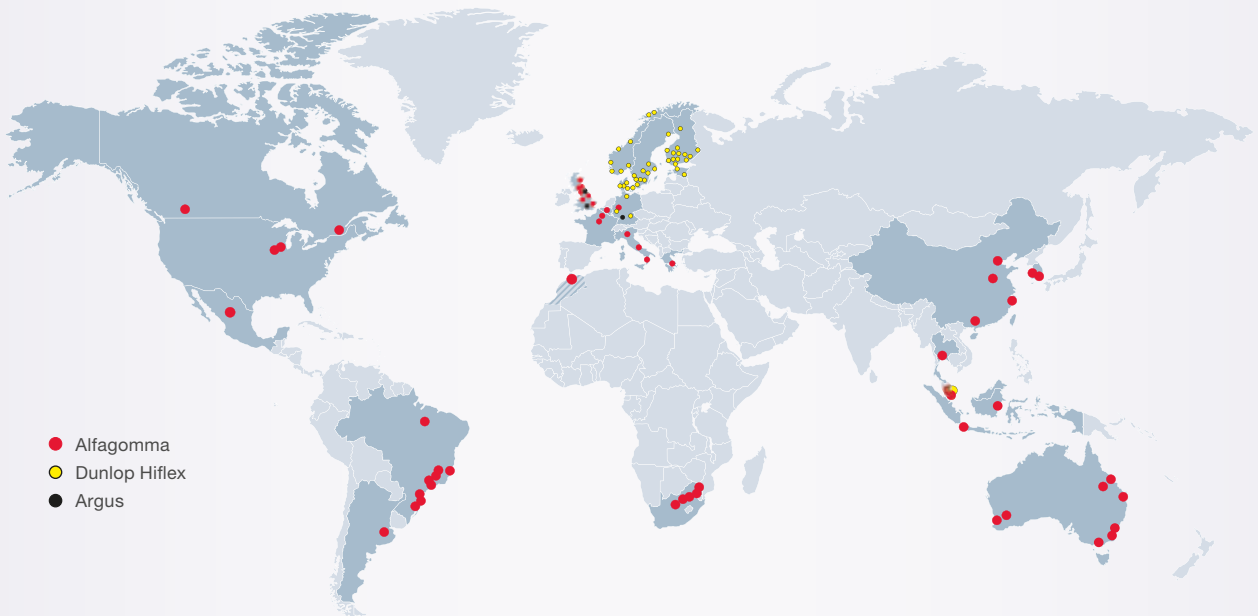


// GLOBAL PRESENCE & LOCAL LOGISTIC SUPPORT

Facing and overcoming the market's daily challenges requires experience, infrastructure, cutting-edge technology and the ability to manage complex systems.

Alfagomma offers innovative customised solutions from design through to repair and maintenance on a global scale, with manufacturing plants and facilities spread over 5 continents guaranteeing local operational and logistic support.

THE ALFAGOMMA GROUP



- Alfagomma
- Dunlop Hiflex
- Argus

- EUROPE:** Italy, Belgium, France, Germany, Greece, United Kingdom, Denmark, Estonia, Finland, Norway, Sweden.
- ASIA-PACIFIC:** Australia, China, Indonesia, Malaysia, Singapore, South Korea, Thailand.
- AMERICAS:** Canada, United States of America, Mexico, Brazil, Argentina.
- AFRICA:** Morocco, South Africa.



THE ALFAGOMMA GROUP

ALFAGOMMA

ARGENTINA – Buenos Aires
Moreno Store Center
Belisario Roldán 2616 - CP. 1744
La Reja - Bs. As.
+54 (11) 5365-6062/6063

AUSTRALIA – Sydney
50 Honeycomb Drive
Eastern Creek
Sydney, NSW 2766
+61 (2) 98 53 09 00
sydney@alfagomma.com.au

BELGIUM & NETHERLANDS – Benelux
Koeweideblock 4/D3
1785 Merchtem
+32 (0)52 509 747
info.benelux@alfagomma.com

BRAZIL – Guaranésia
Rua Felice Gennasio 401
Distrito Indl. Dr. Firmino Rocha de Freitas
37810-000 - Guaranésia, MG - Brasil
+55 (35) 35 55 0408
contato@alfagomma.com.br

CANADA – Montreal
6550 Abrams
St. Laurent, Montreal
Quebec H4S 1Y2
+1 (514) 33 35 577
info@alfagomma.ca

CHINA – Ningbo
No. 1 Cidong South Avenue
Coastal Economic Development Zone
Cixi, Zhejiang, China 315311
+86 (574) 88 15 72 88
alfagomma.china@alfagomma.com.cn

FRANCE – Villepinte
Le Sisley – Parc d'activité Paris Nord 2
23 Allée des Impressionnistes
93420 Villepinte
+33 (1) 48172121
agfrance.info@alfagomma.com

GERMANY – Herne
Friedrich der Grosse 10
44628 Herne
+49 (2323) 14 730
info.germany@alfagomma.com

GREECE – Athens
85 Kifissou Avenue
12241 Aigaleo, Athens
+30 (210) 41 19 909
info.hellas@alfagomma.com

INDONESIA – Tigaraksa
JL. Raya Pemda Tigaraksa km. 4
No 34, Matagara
Tigaraksa, Tangerang 15720
+62 (21) 59 96 301
jakarta@alfagomma.co.id

ITALY – Vimercate
Via Torri Bianche 1
20871 Vimercate (MB)
+39 (039) 60 161
info@alfagomma.com

MALAYSIA – Pasir Gudang
Plo 405, Jalan Perak 4
81707 Pasir Gudang
Negeri Johor Darul Takzim
+60 (7) 25 72 000
alfagomma@alfagomma.com.my

MEXICO – Torreón
Av. Industria de la transformacion
Parque Pymes 585
27400 Torreón, Coahuila
+52 8713125026
alfagomma.mexico@alfagomma.com

SINGAPORE
14 Tuas Ave 11
Singapore 639080
+65 6360 9000
alfagomma@alfagomma.com.sg

SOUTH AFRICA – Johannesburg
17 Quark Crescent Linbro Business Park
Sandton 2065
+27 (11) 20 10 900
alfagomma@alfagomma.co.za

SOUTH KOREA – Hwasung
15 Julteo Gil
Yangkam-Myun, Hwasung-Si
Kyungki-Do 18630
+82 (31) 35 28 671
alfagomma@alfagomma.co.kr

THAILAND – Bangkok
60/21 Moo.4 King Kaew Road
Racha Thewa SubDistrict, Bang Phli District
Samut Prakan Province, 10540
+66 (0) 2 136 2388
sales@alfagomma.co.th

UNITED KINGDOM – Haydock
43 Wilcock Road
Old Boston Trading Estate Haydock
St. Helens WA11 9TG
+44 (1942) 40 76 80
haydock.sales@alfagomma.com

UNITED STATES OF AMERICA – Burlington
3520 West Avenue
IA 52601 Burlington
+1 (319) 75 89 224
info@alfagomma.us

DUNLOPHIFLEX

DENMARK – KOLDING
Kokholm 5
6000 Kolding
+45 43 25 40 00
kundeservice@dunlophiflex.dk

ESTONIA – Tallin
Läike tee 32/1 - Peetri alevik,
Rae vald - 75312 Harjumaa (Tallinn)
Tel: +372 (0) 605 4900
tallinn@dunlophiflex.ee

FINLAND – Pirkkala
Jasperintie 320
33960 Pirkkala
+358 (207) 625 700
info@dunlophiflex.fi

NORWAY – Kjeller
Jogstadveien 39
Pb. 7, 2027 Kjeller
2007 Kjeller
+47 23 00 47 00
sales@dunlophiflex.no

SWEDEN – Halmstad
Seldonsvägen 2
302 62 Halmstad
+46 (0)10 414 44 00
info@dunlophiflex.se

ARGUS

GERMANY – Ettlingen
Pforzheimer Str. 126
76275 Ettlingen
+49 (7243) 50 550
info@argus-fluidtechnik.de

UNITED KINGDOM – Salisbury
Telford Road
Salisbury, Wiltshire SP2 7PH
+44 (1722) 42 05 90
sales@hiflex-europe.com

KIOWA

UNITED KINGDOM – Sleaford
Kiowa Ltd, The Reservation, East Road
Sleaford, Lincolnshire, NG34 7BY
+44 (0) 1529 416200
sales@kiowa.co.uk



HEADQUARTER
Alfagomma SpA
Via Torri Bianche 1
20871 Vimercate (MB) Italy
marketing@alfagomma.com
www.alfagomma.com